

Colorado MESA Industrial Advisory Board Meeting

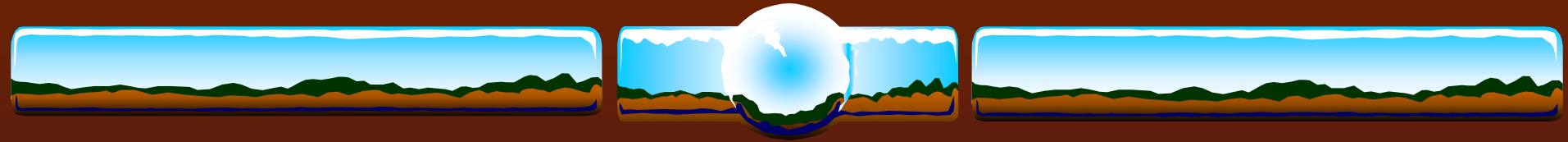
November 20, 2003

Metrics of MESA - Strategy for Effective Programming



AGENDA

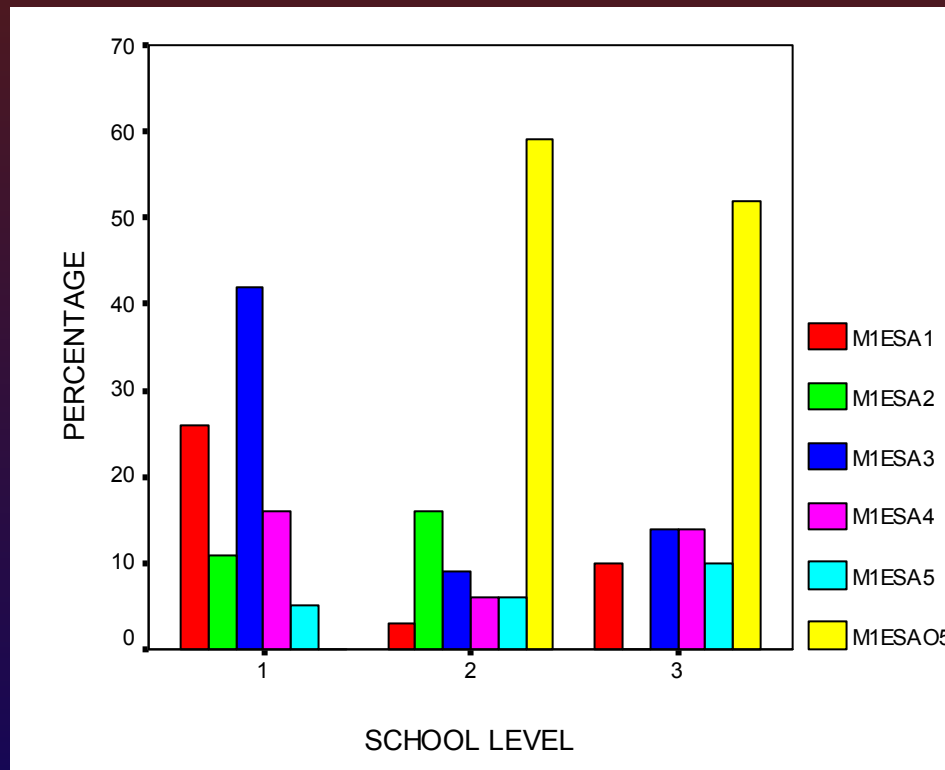
- ❖ *Presentation:* 1. Power Point
- 2. Appendix A – Aggregate Results from 72 schools (10 Elementary, 32 Middle, & 21 High Schools)
- ❖ *Questions*
- ❖ *Additional Information:*
<http://www.InNathansWorld.com/technology/splash.htm>



Growing Popularity of the MESA Program

Increasingly MESA programs are being offered in elementary & middle schools to focus on science, math, and increasing achievement.

MESA Program offered in schools for:





Why MESA?

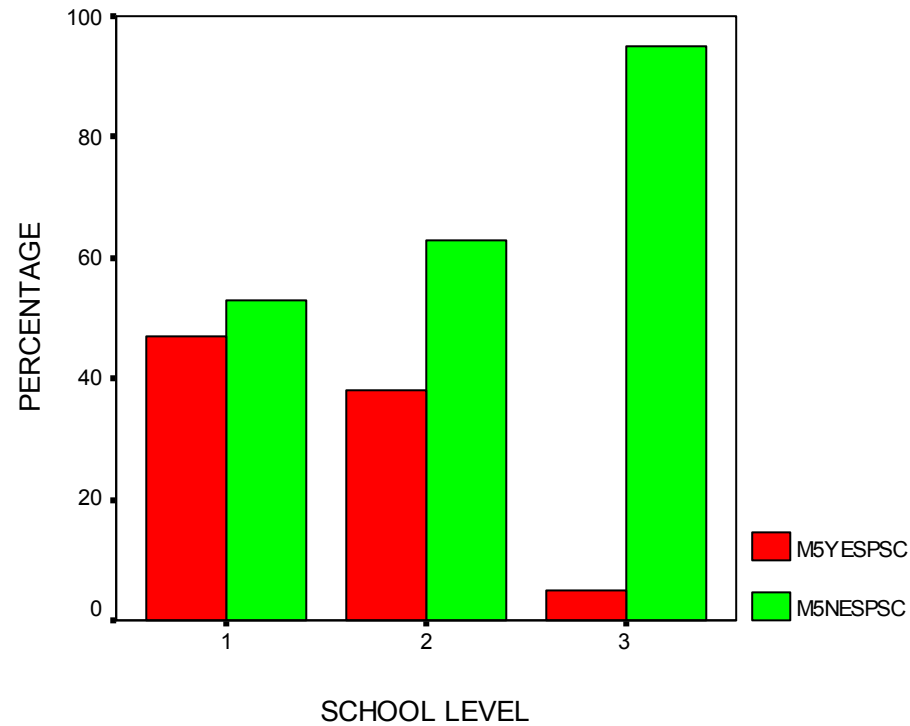
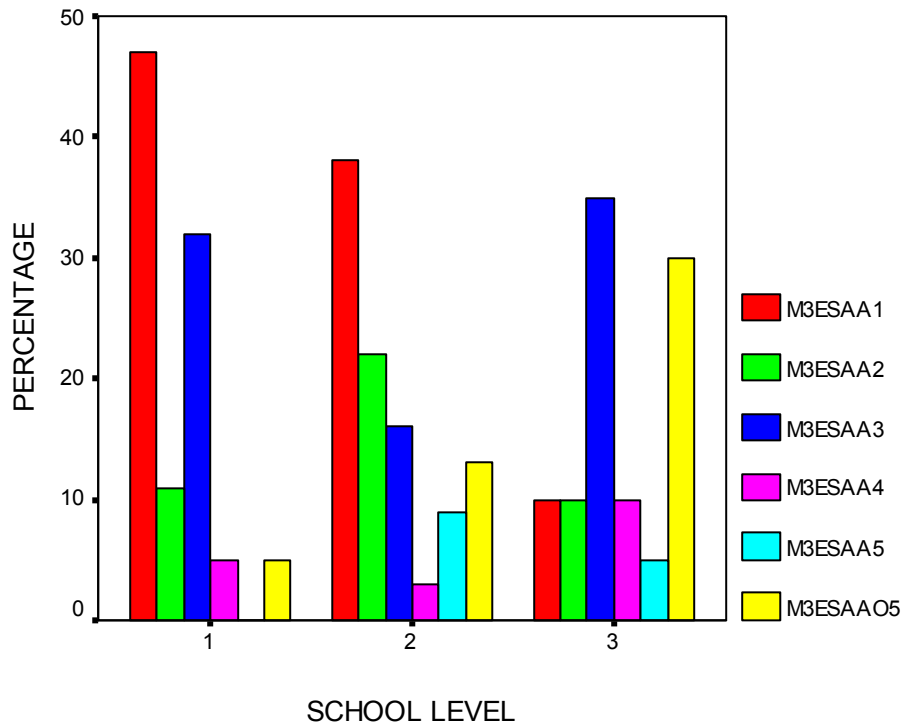
MESA meets the needs of
minority and gifted
students.



MESA Advisors and Structured Curriculum

Experienced MESA
advisors at High Schools
use less structured
curriculum ??

MESA Advisors vs Structured Curriculum





Popular MESA Activities

ELEMENTARY

JASON Project

Hands-on
Investigations

MIDDLE

Field Trips

MESA Day at the
Mall

HIGH

Fall Fling at CU

Field Trips (College
Visits, Industry,
etc.)



BENEFITS OF MESA

Benefit	Level	% Strongly Agree & Disagree
❖Kindles students' enthusiasm in science	Elementary	95%
	Middle	97%
	High	90%
❖Helps forge strong working relation- ships with parents	Elementary	83%
	Middle	71%
	High	79%



BENEFITS OF MESA

Benefit	Level	% Strongly Agree & Disagree
❖ Students explore more career options	Elementary Middle High	89% 61% 63%
❖ Students learn useful “life skills”	Elementary Middle High	89% 90% 100%



BENEFITS OF MESA

Benefit	Level	% Strongly Agree & Disagree
❖ Helps students pursue science & math courses	Elementary Middle High	77% 77% 63%



SUPPORT FOR MESA

Support From	Level	% Moderate & Good
❖ School	Elementary	71%
Administration	Middle	84%
	High	90%
❖ School	Elementary	94%
District	Middle	68%
	High	94%



SUPPORT FOR MESA

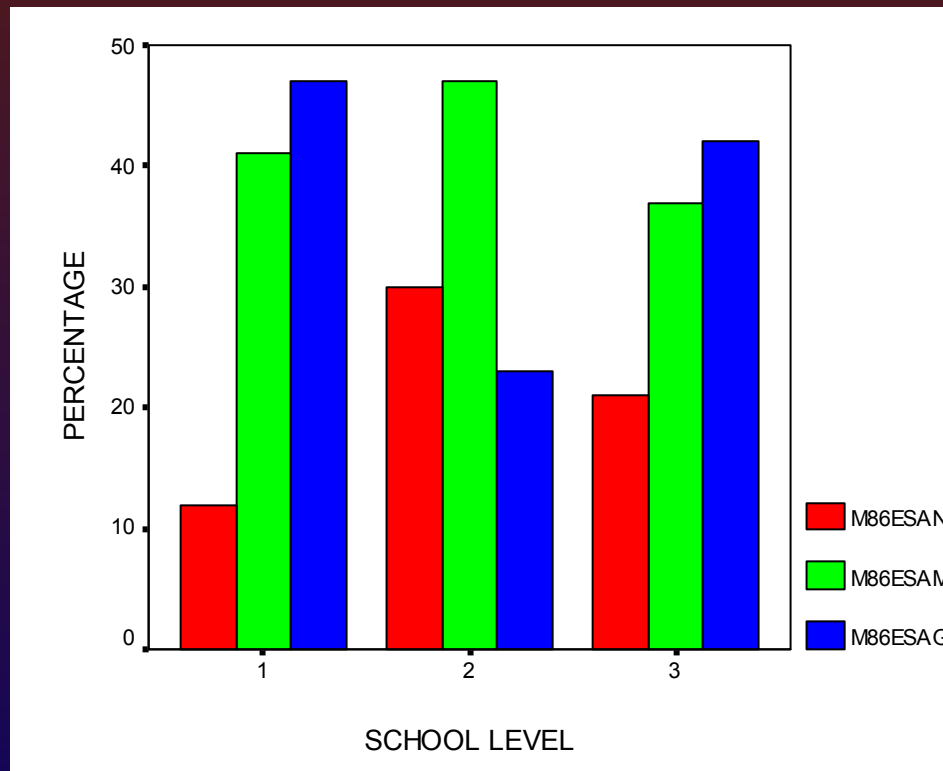
Support From	Level	% Moderate & Good
❖ Colleagues	Elementary	76%
	Middle	77%
	High	79%
❖ Parents	Elementary	82%
	Middle	68%
	High	69%



SUPPORT FOR MESA

Support From	Level	% Moderate & Good
❖ Colorado	Elementary	88%
MESA Office	Middle	90%
	High	95%
❖ Industry/Sponsors	Elementary	88%
	Middle	70%
	High	79%

Support from Industry/Sponsors





RECRUITMENT OF MINORITIES

Category	Level	% Moderate & Adequate
❖ African-American	Elementary	53%
	Middle	77%
	High	47%
❖ Girls	Elementary	100%
	Middle	97%
	High	95%



RECRUITMENT OF MINORITIES

Category	Level	% Moderate & Adequate
❖Hispanic	Elementary	88%
	Middle	74%
	High	89%
❖Native American	Elementary	40%
	Middle	51%
	High	24%



Students' SES

Level	% between 1-3 (on 1 – 6 scale)
Elementary	88%
Middle	87%
High	37%



Summary of initial thoughts

Based on the reading comments from our MESA Advisors in the 72 schools, I make the following observations:

1. MESA is helping motivate the minority students' interest in science and math.
2. MESA is also helping gifted & motivated students, high-achievers.
3. MESA is facilitating students in schools focus on academics.



Summary of initial thoughts

4. MESA is facilitating confidence building, problem-solving skills, “life skills” (such as collaboration, team work, etc.), career development, goal-setting skills, and “thinking” skills in our students.



Summary of initial thoughts

5. A “Curriculum Manual” developed by the Colorado MESA office would be a significant help to Advisors in schools.



Summary of initial thoughts

RECRUITMENT

6. Invitation letters from the Colorado MESA office to parents & students, based on school recommendations could help increase recruitment.
7. Visits by experienced MESA “individuals” to new & prospective schools will also help increase recruitment.
8. Visits by college minority students and minority guest speakers can also help increase recruitment.



Summary of initial thoughts

9. MESA Advisors would like to have information of competitions and events sooner from organizers.
10. First year MESA Advisors request more guidance and support.
11. Focusing on Middle School for a couple of years might help because some High School Advisors observe: “by the time we get them, many have already made up their minds about math & science.”



Summary of initial thoughts

12. One advisors observed that MESA seems to be “elitist” and not a whole school experience.

In my view, this comment alone validates the strength of the MESA program and we need to find ways and means to promote its success in more schools and among more students.